

Let's make sailing safer

At Mac N Hom Marine Equipments (P) Ltd., we are focused on range of products that meet the ever increasing demands of Marine based customers in terms of sophistication and diversification. We have brought to market innovative products, one after another to provide only the highest quality goods and services for your requirements and offer customised solutions and challenging applications quickly and cost effectively.



Let's make sailing safer



Hydraulic Steering Systems : Model. CETO



IRS Type Approved

Balanced Hydraulic actuator- **Model: CETO**
With Swivel Rod Eye to Connect with Tiller Arm

- ◆ More than 100 installations in Passanger Ferries of 50 pax, Rescue Boats, Medium House Boats.
 - ◆ Torque Rating of 500Nm (with 180mm Tiller Arm)
 - ◆ Heavy Duty Ram size: 20mm
 - ◆ Second Thread on other end Piston Rod for Emergencies.
 - ◆ 12 Months Warranty against Manufact. Defects
 - ◆ On-Line Installation and Service Support
 - ◆ Spares including Seal kits readily available
- ① Manual-Hydraulic Version with Helm Pump, Steering Wheel and Self-Priming Unit
 - ② CETO Installation with Tiller arm in Boat
 - ③ Marine Paint Coated, Ferruled Nut ends Seamless Steel Tubes for Smooth Oil Flow
 - ④ Joystick operated Control Panel with Audio-Visual Alarms
 - ⑤ Electro-Hydraulic Power pack with Sensors for Electro Hydraulic Version



Manual-Hydraulic Package:

- ❖ Steering Wheel - Wooden/SS
- ❖ Helm Pump, Steering Column & Self priming unit
- ❖ Marine Painted Ferruled Seamless steel Tubes & Hoses
- ❖ Hydraulic Actuator-**CETO**

Electro-Hydraulic Package:

- ❖ Joystick Control Panel
- ❖ Hydraulic Power pack & Sensors
- ❖ Emergency Manual-Hydraulic Steering
- ❖ Marine coated Ferrules Tubes & Hoses
- ❖ Hydraulic Actuator - **CETO**

MAC♦N♦HOM MARINE EQUIPMENTS (P) LTD.

57/187-C, 'VRINDAVAN', Chilavannur Road, Kadavanthra, Kochi-682 020, Kerala, India

Mob.: + 91 9072900576, +91 484 2312396, 2319998, E-mail: info@macnhomsystems.com web site: www.macnhomsystems.com

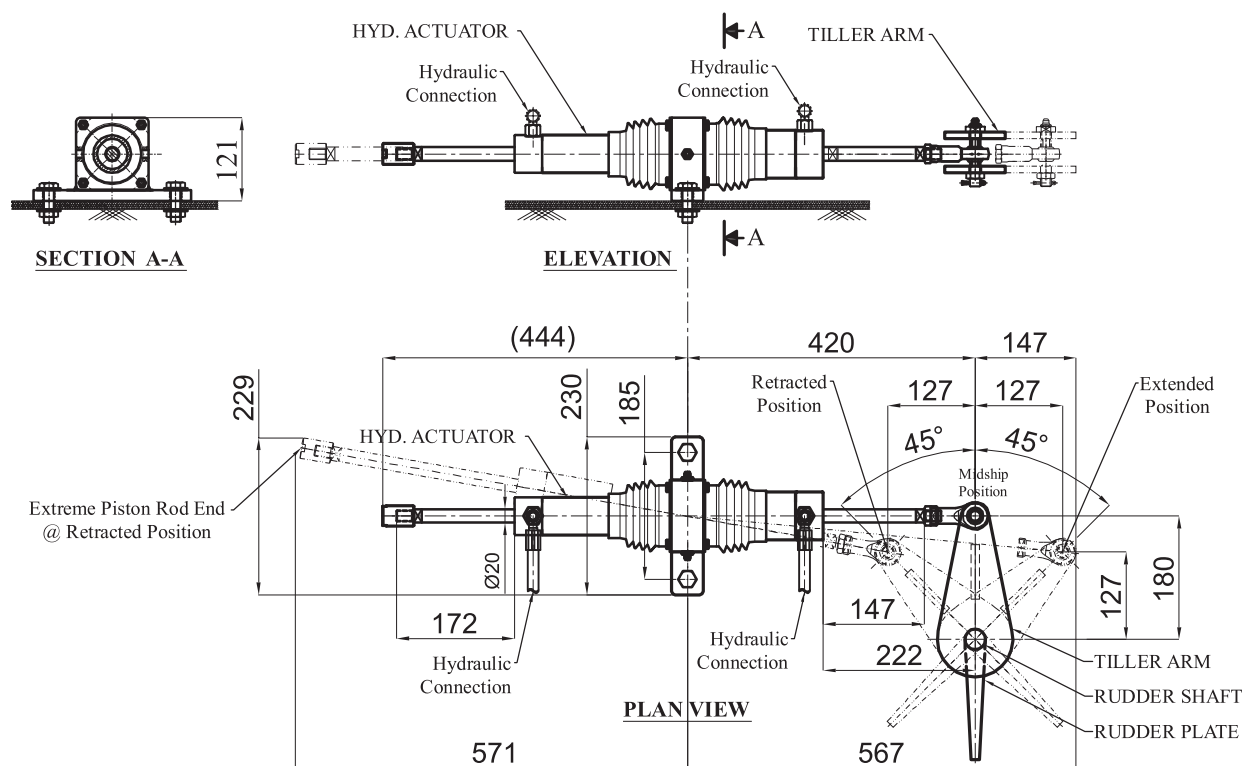
CIN: U29308KL2018PTC055182



SPECIFICATIONS

- Actuator Ram Diameter : 20 mm.
- Actuator Stroke : 260 mm.
- Force @ 45 Kg / cm² Hydraulic Pressure : 423.9 Kgf.
- Torque with 180 mm Tiller Arm for $\pm 45^\circ$ turn from Midship.
(Actuator Pin to Rudder Shaft Centre distance : 180 mm.) : 51 Kg.m.
- Torque with 220 mm Tiller Arm for $\pm 35^\circ$ turn from Midship.
(Actuator Pin to Rudder Shaft Centre distance : 220 mm.) : 62.35 Kg.m.

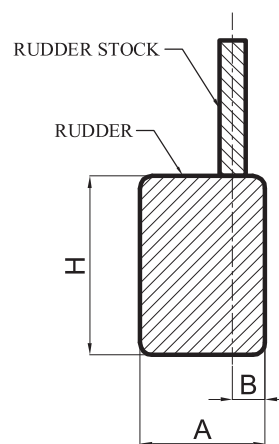
MOUNTING ARRANGEMENT OF HYD. ACTUATOR CETO - IRS



DATA FOR STEERING SELECTION

| VESSEL DETAILS | | |
|---|--|--------|
| Length of the Vessel | | Meters |
| Breadth of Vessel | | Meters |
| Draft of the Vessel | | Meters |
| Hull form (Mono / Catamaran) | | |
| No of Engines | | Nos. |
| Power of each Engine | | HP |
| Speed of Vessel | | Knots |
| RUDDER DETAILS (See Rudder Dwg.) | | |
| Breadth of Rudder A | | Meters |
| Breadth of Semi-balanced Area B | | Meters |
| Height of Rudder H | | Meters |
| Number of Rudders | | Nos. |
| Vessel Regn. Class - No Class / IRS / RINA / DNV / BV | | |

RUDDER DWG.



- NOTES : 1. Please fill in this data sheet with your Vessel data, and email to info@macnhomsystems.com OR Whatsapp to +91 90729 00576.
2. All dimensions are in mm.
3. Dimensions are reference purpose only; kindly confirm with our Technical Department.